

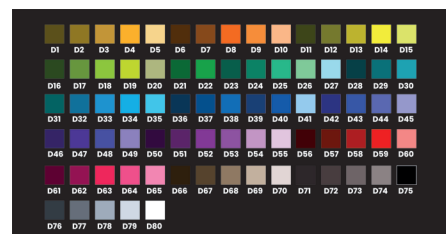
Desk Chair Logo Impressions

Specialty Mats • Indoor

Desk Chair Impressions mats feature your custom logo or artwork digitally printed. Choose from 80 standard color options. M+A Desk Chair Mats not only help protect your floor, they also add some visual interest to your office space.



- **HIGH-QUALITY PRINT** – Logos and designs are digitally printed; fine details, shading, and 3D images can be achieved
- **80 Standaard kleuropties beschikbaar**
- **Glides Easily** – Your chair will glide easily over the firm but beautiful surface
- **Skid-Resistant Floor Protection** – The durable rubber backing protects your floors and keeps your mat from sliding
- **Easy to Clean** – The stain-resistant PET surface can be vacuumed and/or wiped clean with mild detergent
- **Designed for placement on hard floors** (will work on low-pile carpet, but not designed for anything softer)



80 Standard color options

Colors may vary due to inconsistencies of various display monitors or printers (if you're viewing a printed version of this document). Color images are intended to be used as a guide only.

Desk Chair Logo Impressions

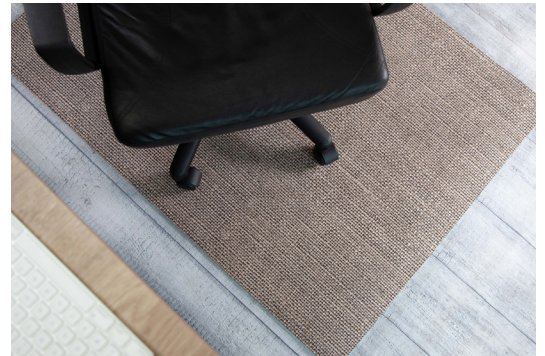
Specialty Mats • Indoor



Product No. 32765

Size: 120 x 90 cm

Note: Mat sizes are approximate as rubber shrinks and expands in conjunction with temperature and time.
Tolerable manufacturing size variance is 3-5%



Specifications

Carpet:	(Soft) Knitted Polyester upper layer
Rubber:	SBR Rubber bottom layer
Thickness:	4 mm
Weight:	3,6 kg